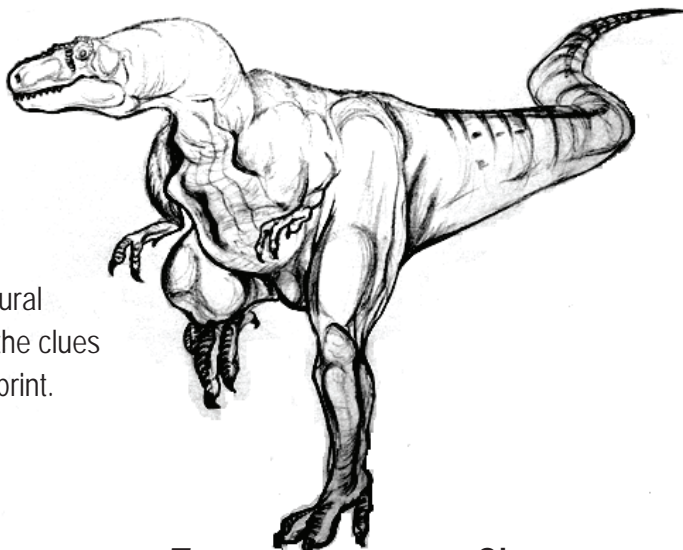


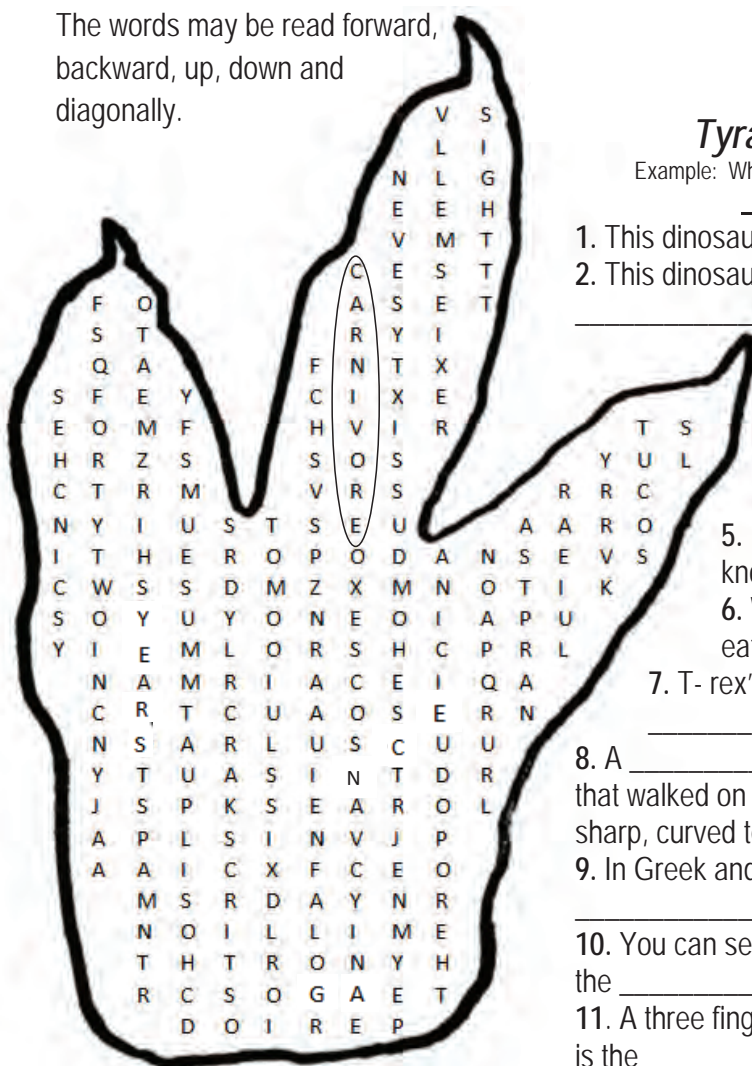
# KID'S KORNER

## Museum Dinosaur Scavenger Hunt!



Come to the Mississippi Museum of Natural Science to find clues about T- rex. Use the clues to find the words hidden in T- rex's foot print.

The words may be read forward, backward, up, down and diagonally.



### Tyrannosaurus rex Clues

Example: What is another word for meat eating dinosaur?

Carnivore

- This dinosaur grew up to \_\_\_\_\_ feet long.
- This dinosaur had a good sense of \_\_\_\_\_ and \_\_\_\_\_.
- Belonged in what Time Period? \_\_\_\_\_
- On what continent did this dinosaur live? \_\_\_\_\_
- Belonged to the group of dinosaurs known as a: \_\_\_\_\_.
- What type of food does this dinosaur eat? \_\_\_\_\_
- T- rex's largest teeth grew up to \_\_\_\_\_.
- A \_\_\_\_\_ was a dinosaur that walked on its back legs, had powerful jaws and sharp, curved teeth.
- In Greek and Latin, Tyrant Lizard King translates to \_\_\_\_\_.
- You can see a replica of the *Tyrannosaurus rex* at the \_\_\_\_\_.
- A three fingered cousin of the *Tyrannosaurus rex* is the \_\_\_\_\_.

Answers: 1. Forty-two 2. Sight, smell 3. Cretaceous Period, sixty-seven million years ago 4. North America 5. Theropod 6. Meat 7. Six Inches 8. Theropod 9. *Tyrannosaurus rex* 10. Mississippi Museum of Natural Science 11. Appalachiosaurus